



MORE
TIME
FOR WHAT
MATTERS

2023 EQUESTRIAN ATTACHMENTS CATALOG



ARENA DRAGS | WATER TRAILERS | MANURE SPREADERS | PROPERTY ATTACHMENTS

BUILD YOUR TRAINING ON SOUND FOOTING



Although every reasonable effort is made to ensure accuracy in this catalog, ABI Attachments, Inc. is not responsible for typographical or illustrative errors. Specifications and features are subject to change without notice. Actual products may differ slightly from images and may be shown with optional equipment.



EMPOWERING BETTER WAYS TO GET OUTDOOR WORK DONE SO YOU CAN SPEND MORE TIME IN THE SADDLE

At ABI, we know you work day in and day out to give your horses the best care, training, and resources. You already go the extra mile to get the best for your horses, you just need equipment to keep up with you. Which is why ABI makes tractor, UTV, and ATV attachments custom-built for equestrians. ABI is the industry leader in arena drags, water trailers, and manure spreaders because we prioritize getting outdoor work done faster and better, every time. So you can spend less time in the driver's seat and more time in the saddle.



ABI Attachments prioritizes the highest quality American manufacturing and construction. Our engineers design each attachment with real-world customer needs driving every innovation. Built for hard work and engineered to last for years and years to come.



We believe in avoiding hassle wherever possible. Which is why ABI sells and ships products directly to the customer, so you can skip the hassle of finding a dealer and avoid having to deal with any middle men marking up the prices.



When you call ABI, a Product Specialist will take the time to understand your specific needs so you get the best attachment for the job. We have full confidence the product you buy after talking with us will match your application usage and vehicle capabilities. If it doesn't, you can send it back within thirty days and we'll issue a full refund. See our website for limitations/details.

TABLE OF CONTENTS

NATURAL ARENA DRAGS - MULTI-PURPOSE	4
NATURAL ARENA DRAGS - COMPETITION	20
SYNTHETIC ARENA DRAGS	36
WATER TRAILERS	48
MANURE SPREADERS	56
PROPERTY ATTACHMENTS	67



NATURAL ARENA DRAGS – MULTI-PURPOSE

PROTECTING YOUR HORSE FROM HEAD TO HOOF

You invest in supplements, training, veterinary care, and so much more. Why? Because you want to give your horses every advantage to stay in tip-top shape and perform their best. A huge part of creating the best environment for your horse to succeed is caring for the very ground they practice and train on.

Which is why you don't want to invest in an arena drag that only makes the top look pretty. You need a drag designed to holistically address the arena's footing profile, one that can create a consistent and safe foundation for your horses' hooves every single time. Consistency in the footing means your horses don't get distracted by uneven spots, so they can be wholly attentive to your cues. This helps avoid footing-related injuries—keeping both horse and rider safe as they work together.

4 QUESTIONS TO ASK WHEN PLANNING YOUR FOOTING CARE ROUTINE:

- 1 What tow vehicle do I have available to pull an arena drag?
- 2 What problems do I have in my arena that I need to fix?
- 3 How do I expect my arena to perform for my riding discipline and facility operations?
- 4 What arena footing material do I have and how much moisture does it require?

ARENA DRAGS FOR EVERY EQUESTRIAN



ARENA RASCAL PRO

Featuring our patented profile blade technology and wheel lift system, the Rascal Pro is a top performer for ATV and UTV owners.



TR3E: EQUINE EDITION

Five ground-engaging components, designed for everyday arena grooming and frequent property work for sub-compact and compact tractors.



TR3 RAKE

The heavy-duty design that started it all is ideal for larger tractors. The TR3 has countless applications in your arena and around your property.

“ABI IS THE INDUSTRY'S
MOST RESPECTED
INNOVATORS.”

CLINTON ANDERSON
Horsemanship & Reining



ARENA RASCAL PRO

PERFECT FOOTING MADE EASY

FROM THE SEAT OF YOUR QUAD OR SIDE-BY-SIDE

The Arena Rascal Pro is easy to connect and easy to use—making it simpler than ever to ensure your horses' soundness. This attachment empowers you to create precision in your footing without the need for a tractor or a skilled operator. The patented Arena Rascal Pro's connect-and-go convenience and its professional-grade grooming results are just a few reasons it's the go-to tool for tens of thousands of horse trainers, competitors, and backyard riders.



ONE TOOL DOES IT ALL



GROOM AND RENOVATE ARENAS

The Arena Rascal Pro eliminates compaction and creates a groomed riding surface. It's vital for the safety of your horses that your arena drag removes hidden compaction dangers below the surface—the ones you can't see, but your horses can feel.



GRADE GRAVEL DRIVEWAYS

A versatile tool in the arena and out. The Arena Rascal Pro is also a gravel driveway and parking lot resurfacing tool able to bring compacted gravel back to the surface and restore pothole-laden driveways back to new.

MEET AMERICA'S BEST-SELLING ATV/UTV HORSE ARENA DRAG



(SHOWN WITH OPTIONAL EQUIPMENT)



MAINTAIN PASTURES & DRY LOTS

Manage mud and manure with ease. Livestock pasture, paddock, and dry lot maintenance is no match for the Arena Rascal Pro. It can repair mud-prone areas, loosen soil for reseeding, as well as break up and spread manure.



CARVE OUT FOOD PLOTS & RIDING TRAILS

An adaptable, durable tool is needed to maintain trails for power sports, snowmobiles, and horses. And if you are looking to cultivate gardens or wildlife food plots, you can simply swap in the optional disc system and you're set to get planting.

BETTER EQUIPMENT. BETTER RIDE.

Our patented design was created to increase rider enjoyment and horse soundness. Inconsistent arena surfaces create footing uncertainty in your horses, increasing their chances of getting distracted or injured. Which is why tools like miniature field harrows and spin-style groomers have become outdated—they don't create consistency from the bottom up. Getting that perfect base-to-surface consistency shouldn't be difficult. We engineered the Arena Rascal Pro to groom both the top arena surface and the subsurface arena profile for complete conditioning from the ground up, on every pass.



GROUND-ENGAGING COMPONENTS

(SHOWN WITH OPTIONAL EQUIPMENT)



PROFILE BLADE

The base-safe profile blade technology slices through the arena footing, down to the subsurface, eliminating ridging and compaction layers above the base.



SCARIFYING TEETH

Quickly swap the profile blade for the scarifying teeth for tough footing, soil, and gravel projects. Adjustable from 0–6" deep with replaceable tips to lower routine maintenance costs.



FINISH & GRADING RAKE

Made of highly durable ½"-thick hardened steel, this tool creates a beautiful signature finish in your arena footing with each pass. Pivot the rake up to 90° to grade, break up, and collect material.



U.S. PATENT NUMBERS. 7,478,682, 7,540,331
& OTHER PATENTS PENDING

Arena Rascal Pro Models

4.5'	300 lbs.	400 cc
5.5'	339 lbs.	500 cc
6.5'	379 lbs.	600 cc
7.5'	475 lbs	700 cc

ARENA RASCAL PRO



Expert Perspective

CLINTON ANDERSON

Horsemanship & Reining

"Anybody can use the Arena Rascal Pro—it's a breeze to attach, set up, and get working. Whatever your discipline, the Arena Rascal Pro can set and maintain a consistent base, with the desired depth of even, cushioned, clump-free footing on top.

I find that the horses I'm working with are more attentive and in tune with what we're doing together when the footing is freshly groomed and in good shape. Since a poor working environment can undermine the time and effort you put into your horse, it's a no-brainer to use a drag that easily keeps your footing in good shape from top to bottom!"

OPTIONAL EQUIPMENT

RAIL/WALL BLADE

Pull build-up away from the arena rail, wall, or fence with a rail blade that extends to the rail.

MINI-BOX BLADE

Enables precise, earth-moving applications. Pair with an actuator for grading efficiency and driveway crowning.

3-POINT ADAPTER

Convert between 3-point sub-compact tractor and ATV with a quick-swap capability.

FOOD PLOT DISC

Prep gardens, restore wild animal damage, cultivate food plots, and so much more.

More info on pg. 58

ELECTRIC ACTUATOR

Add a push-button for effortless control of transport, grading, and renovation from the seat of your tow vehicle.

TRANSPORT & DEPTH CONTROL SYSTEM

The patented wheel-lift system raises and lowers components for transport and consistent footing depth control.



Call a Product Specialist at 877-788-7253
or Visit www.ArenaRascalPro.com

TR3-E EQUINE EDITION

SIMPLE TO ACHIEVE ELEVATED PERFORMANCE

You don't have to run a professional facility to know the care and soundness of your horses is essential to their performance. The consistency of the surfaces they move across while training and competing play a critical role in their soundness and career endurance. The TR3-E Equine Edition is engineered to elevate the safety, performance, and longevity of your horses. The TR3-E is America's best-selling 3-point tractor drag because it's trusted by nationally recognized event facilities, trainers, and competitors, as well as thousands of hobby farmers and backyard riders.



QUICK HITCH
COMPATIBLE



U.S. PATENT #6,739,404 & 8,944,176

PROFESSIONAL RESULTS WITH A COMPACT TRACTOR



EASY-TO-USE DESIGN

The TR3-E Equine Edition is designed for ease of use with sub-compact and compact tractors, with no specialized skills or hydraulics required. The TR3-E Equine Edition is quick-hitch compatible.



BETTER RESULTS, FASTER THAN EVER

Gone are the days of dragging with tools not intentionally made to maintain horse arenas. Designed from the ground up as an arena drag, the TR3-E Equine Edition delivers premium-level arena maintenance results unmatched by other 3-point tractor drags.

MEET AMERICA'S BEST-SELLING 3-POINT TRACTOR DRAG



(SHOWN WITH OPTIONAL EQUIPMENT)



NO ARENA TOO ROUGH

Whatever your arena's condition, the TR3-E Equine Edition has the components you need to perfectly maintain or restore your arena space. Our patented profile blades protect and clean an installed base or create a quasi-base where there is none.



CONSISTENCY, EVERY TIME

The TR3-E Equine Edition's positive depth control technology enables consistent arena footing depth by holding the ground-engaging components in suspension for repeatable results each time you drag.

SAY GOODBYE TO THE ATTACHMENT GRAVEYARD

Single-use tools inevitably end up forgotten behind the barn. You won't find the TR3-E Equine Edition in an attachment graveyard because this tool is durable and built for versatility. From arena grooming, to reinvigorating gravel driveways, to getting your land ready for hunting season—the TR3-E Equine Edition does it all.

THE ALL-IN-ONE TOOL



GROOM AND RENOVATE ARENAS

The TR3-E Equine Edition eliminates compaction and creates a groomed riding surface. It's vital for the soundness of your horses that your arena drag removes hidden compaction dangers below the surface—compaction you can't see, but your horses can feel.



GRADE GRAVEL DRIVEWAYS

A versatile tool in the arena and out. The TR3-E Equine Edition is also a gravel driveway and parking lot resurfacing tool that breaks up compaction in existing gravel and restores pothole-laden driveways back to new.



(SHOWN WITH OPTIONAL EQUIPMENT)



MAINTAIN PASTURES & DRY LOTS

Manage mud and manure with ease. Livestock pasture, paddock, and dry lot maintenance is no match for the TR3-E Equine Edition. It can repair mud-prone areas, loosen soil for reseeding, as well as break up and spread manure.



CARVE OUT TRAILS & FOOD PLOTS

You need an adaptable and durable tool to maintain horse, power sport, and snowmobile trails. And if you are looking to cultivate gardens or wildlife food plots, you can simply swap in the optional disc system and you're set to get planting.

YOUR HORSE DESERVES SOUND FOOTING

Get the best out of your footing, and your horses, every time with the TR3-E Equine Edition. Inconsistent arena surfaces create footing uncertainty for your horses and increase their chances of distraction and injury. Many implements on the market don't have the capability to create footing consistency from the base to the surface. Which is why we engineered the TR3-E Equine Edition to groom both the top arena surface and the subsurface arena profile for complete conditioning from the ground up, on every pass. Because getting the best out of your footing shouldn't be difficult. The TR3-E Equine Edition makes those perfect results simple *and* repeatable.



INDEPENDENTLY ADJUSTABLE COMPONENTS

PROFILE BLADE

The base-safe profile blade technology slices through the arena footing, down to the subsurface, eliminating ridging and compaction layers above the base.

ADJUSTABLE FINISH RAKE

Create a picture-perfect, signature finish, on each pass. Made with durable ½"-thick hardened steel, you can use the finish rake on gravel, manure, and soil prep projects.

DEPTH-CONTROL WHEELS

Get precise grooming and consistent footing depth with our patented center-mounted stabilizing gauge wheels.

SCARIFYING TEETH

Adjustable teeth from 0–5" deep to tackle tough footing, soil, and gravel work. They also blend soil particles for greater stability. The bolt-on tips are easy to replace.

LEVELING BLADE

The TR3-E Equine Edition provides an exclusive patented leveling blade with a floating or locked design to move material from high spots to low spots.

GROOMING RODS

You can set the rods for more cushion, grip, or texture to optimize for your discipline. The grooming rods condition vertically to consistently feed footing into the finish rake.

OPTIONAL EQUIPMENT

RAIL/WALL BLADE

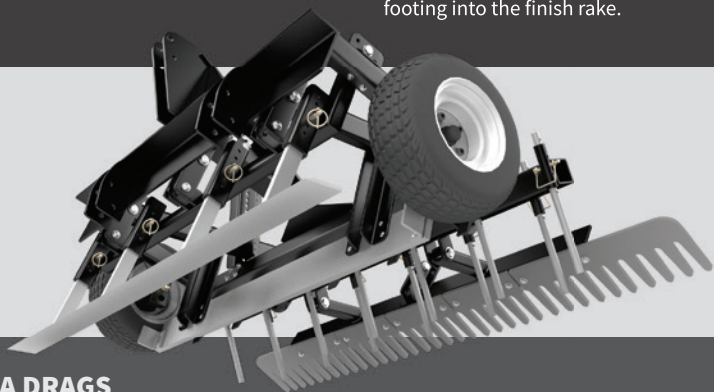
Pull buildup away from the arena rail, wall, or fence with a rail blade that extends to the rail.

FOOD PLOT DISC

Prep gardens, restore wild animal damage, cultivate food plots, and so much more.



More about food plot discs on pg. 58



TR3 E-Series Models

6'	679 lbs.	23 hp
7'	780 lbs.	32 hp
8'	895 lbs.	40 hp



Expert Perspective

DANA HOKANA

Western All-Round & Clinician

"Having an arena drag that takes care of our whole footing profile in one pass gives me peace of mind knowing my horses can safely get to work the moment they walk into the arena. Our horses rely on good ground to not only perform but be attentive to their rider's cues.

I just love my TR3-E Equine Edition because it is easy to use and incredibly efficient. We have a lot of horses to ride during the day and I can trust anyone to hop on and drag the arena because the results are the same every time."

Call a Product Specialist at 877-788-7253
or Visit www.TR3ESeries.com



THERE'S NO JOB THE TR3 CAN'T HANDLE

The TR3 is the original ABI attachment. Invented in 1996 by our CEO and founder, Kevin Keigley, this tool is welded out of heavy steel and is capable of excelling at practically every dirt related job you need it to—in and out of the arena. The TR3 is the only 3-point tractor tool that loosens, levels, and rakes on every pass without the use of hydraulic or PTO controls. Our patented TR3 design has more power and functionality using simple components. It doesn't have to be complicated to get the work done.



TACKLE TOUGH JOBS & ROUTINE WORK



TOP-TO-BOTTOM CONSISTENCY

Maintain a perfect grade with our floating leveling blade that automatically smoothes out uneven areas. Lock it in place for more aggressive grading. The foam-filled, never-flat wheels ensure a consistent material depth.



LOOSEN ANY MATERIAL

Adjustable cast scarifiers with replaceable tips are built to last and to be easy to maintain, allowing you to condition any arena footing to the desired depth for better cushion and performance.

THE TOOL THAT STARTED IT ALL



U.S. PATENT # 5,806,605 & 6,739,404

(SHOWN WITH OPTIONAL EQUIPMENT)



POWER & PERFECTION

The heavy, hardened-steel finish rake is the TR3's steady hand. It breaks up clumps and creates a perfect, even finish. It also has the power to push material backwards to fill in low spots or slice through vegetation.



HEAVY-DUTY RELIABILITY

The TR3 is welded out of heavy-duty steel components so you can use the power of your tractor to get through tough hardpan, hard gravel lots and drives, and heavy vegetation. If you've got land work to do, the TR3 can do it from start to finish.

THE PERFECT COMPANION FOR A COMPACT OR UTILITY TRACTOR

The TR3 tractor rake is a commercial-quality drag designed to handle all-day every day use. With each pass, the TR3 levels, loosens, and rakes material to create a picture-perfect, signature finish. The TR3 is versatile as well as durable—ready for the routine chores and tough projects you need done in and out of the arena.

INNOVATIVE FEATURES

LEVELING BLADE

The patented leveling blade floats to automatically level high and low areas and maintain a perfect grade. Lock in place for more aggressive cut-and-fill grading. Optional Rock Teeth help sift out larger debris and rock.

DEPTH-CONTROL WHEELS

Foam-filled stabilizing wheels help keep the tool under control to avoid gouging into an arena's base or sinking into loosened footing material.

SCARIFYING TEETH

The scarifying teeth can penetrate even the hardest conditions—up to seven inches deep. Move from gentle sand grooming to breaking up hardpan with ease.

STEEL FINISH RAKE

The 3/4" thick hardened-steel rake pulverizes clumps and leaves a smooth finish. Push backwards to move material and complete light land clearing jobs. It can be replaced easily in one foot sections.

OPTIONAL EQUIPMENT

RAIL BLADE

Make quick work of pulling footing buildup away from the arena rail or wall to save a substantial amount of time and labor.

HYDRAULIC TOP LINK

Adjust the TR3's pitch from the seat of the tractor to enhance efficiency during heavy renovation work.

ROLLING BASKET

Add a hydraulic-controlled rolling basket to the TR3—ideal for barrel racing, roping, roughstock, and all rodeo events.

FOOD PLOT DISC

Prep gardens, restore wild animal damage, cultivate food plots, and so much more.

More info on pg. 58



PROFILER OPTION

For larger tractors, a TR3 with the profiler option provides additional arena grooming prowess and creates an event-worthy finish.



TR3® Rake Models

5.5'	576 lbs.	25 hp
6.5'	734 lbs.	27 hp
7.5'	880 lbs.	35 hp
8.5'	1065 lbs.	48 hp
10'	1190 lbs.	60 hp



TR3



PHOTO CREDIT: CRAIG JOHNSON INTERNATIONAL

Expert Perspective

CRAIG JOHNSON

Champion Reiner

"I've been a professional trainer of reining and ranch horses for over forty years. In that time I've used every piece of ground working equipment you can imagine in order to provide the best and safest possible surface to train my horses on. I'm picky about my ground."

The TR3 Profiler is the ultimate tool in maintaining a smooth base with even depth of soft footing on top. In just one day, I turned my training arena from good to amazing.

Now I have the perfect ground on which to give my horses confidence and trust in the high level maneuvers I'm asking of them."

**Call a Product Specialist at 877-788-7253
or Visit www.TR3Rake.com**

NATURAL ARENA DRAGS – COMPETITION

PROFESSIONAL RESULTS FOR DEMANDING COMPETITION

Whether you run a public equestrian center or elite training facility, the high-stakes decisions concerning arena footing performance and safety are critical. Footing can make or break a run, an event, a facility, or a career. That's why, as competitors and trainers continue to advance what's possible, it's essential to invest in competition-grade equipment to manage arena footing properly.

At ABI, we draw on our years of experience and our team of expert partners to design and build the best arena drags for the requirements each discipline demands. We believe that your arena care routine should be easy to keep up and it should provide a solid and consistent foundation for you and your horses' continued success.

4 PRINCIPLES OF FOOTING CARE:

- 1 **CONSISTENCY** - Can any member of your team repeat the same, consistent results?
- 2 **VERSATILITY** - Can you easily adapt to changing conditions and disciplines?
- 3 **PRECISION** - Can you create level, safe footing, with a solid base, throughout your arena?
- 4 **EFFICIENCY** - Can you get the job done effectively, in the amount of time required?

INDUSTRY LEADING WESTERN COMPETITION DRAGS



TR3-E TREVOR BRAZILE EDITION

Designed by Trevor Brazile and ABI Equine to be the perfect drag for roping and rodeo events. Works with tractors 35 hp+ and features a hydraulic finish rake that pivots up for grooming the back of the box in timed events.



ABI SPEEDMASTER

Engineered for large tractors and speed events. No 3-point drag works faster to prepare the ground more thoroughly. Perfect for barrel racers, timed events, and event centers.



ABI DRAGMASTER

The most capable large arena drag on the planet. With independent grooming components and a pull-behind ground-plane design, precise and repeatable results are easy to achieve.

“ONCE I REALIZED HOW MUCH OF A DIFFERENCE A GREAT DRAG MADE IN AN ARENA, THERE WAS NO GOING BACK.”

TREVOR BRAZILE

Champion Roper





IMPROVE YOUR PRACTICE. ELEVATE YOUR PERFORMANCE.

Roping and rodeo events are won and lost by fractions of seconds. Training on poorly maintained footing can mean the difference between winning and losing. Trevor Brazile, the world's most decorated roper, has teamed up with ABI Equine, the world's largest arena drag manufacturer, to create the TR3-E Trevor Brazile Edition, the most effective arena drag designed specifically for rodeo and roping events. Get the best out of your horse and your arena by properly conditioning every inch of your arena footing—especially the starting box!



U.S. PATENT #6,739,404 & 8,944,176

BUILT FOR THE BOX

The hydraulic finish rake is a gamechanger for ropers. The roping box is critical for getting the best time in competition. The TR3-E Trevor Brazile Edition is the first and only arena drag engineered to work inside the box with ease. Now the operator can hydraulically raise the rear rake to reach the grooming rods into the back of the box. As you drive forward, lower the rake to finish the footing as you exit the box. No more hand tools or bucket work needed to work inside the box with ease.



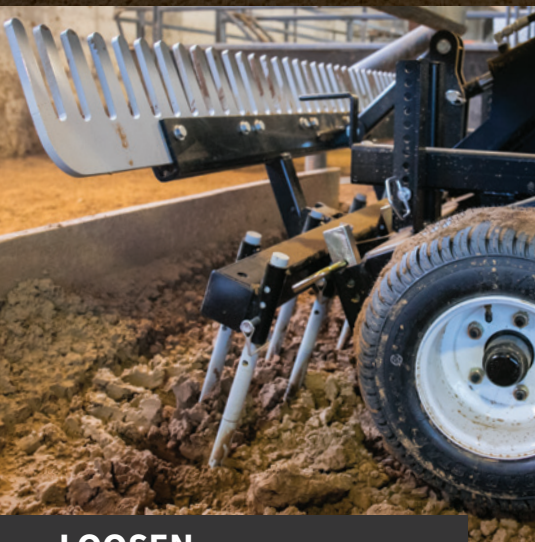
“IT'S THE PERFECT DRAG
IN MY OPINION. THAT'S
WHY I PUT MY NAME ON IT.”

TREVOR BRAZILE



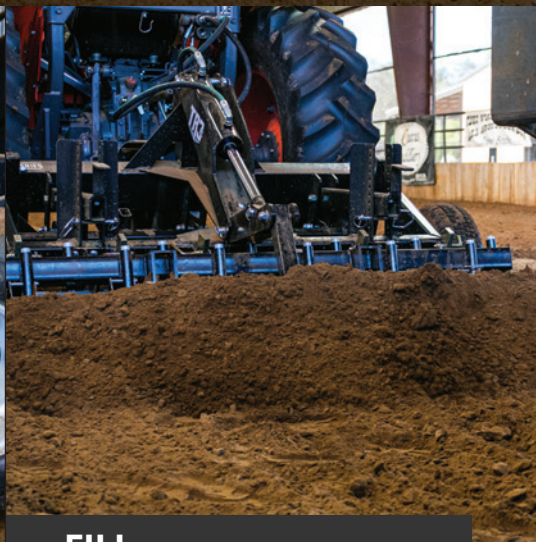
(SHOWN WITH OPTIONAL EQUIPMENT)

MAXIMIZE YOUR COMPETITIVE ADVANTAGE



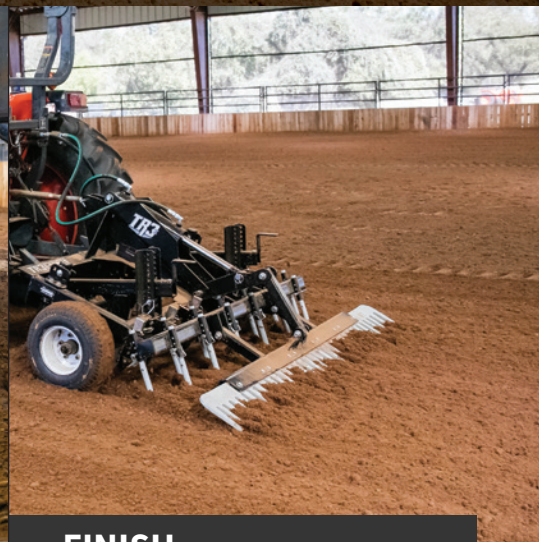
LOOSEN

The rake raises to get the ground engaging components into the back of the box to loosen compaction. Then, with precision control, the rake lowers to create a consistent finish between the box and the arena.



FILL

If the box needs filled, the hydraulic finish rake can also push loose material back, or it can collect displaced material and pull it into the box.



FINISH

Outside of the box, the hydraulic finish rake can pivot into a variety of finishing and grading positions to optimize material flow, pulverize clumps, and expertly create our famous signature finish.

FIVE CONTACT POINTS & ONE REVOLUTIONARY RAKE

The TR3-E Trevor Brazile Edition has five points of contact with the ground. These independently adjustable components give you the control needed to groom, prepare, and renovate both the arena and the roping box—just like Trevor Brazile does in his personal arenas.



INDEPENDENT COMPONENTS

DEPTH-CONTROL WHEELS

These wheels prevent components from going deeper than they are set or undulating with the tractor tires. Our patented depth-control wheels are the secret to consistent results.

SCARIFYING TEETH

Penetrates compacted arena footing. Adjustable from 0–7" to get the perfect amount of aggressiveness and depth. Strong enough for gravel driveway maintenance. The tips are replaceable.

PROFILE BLADES

These patented blades can be set to ride above the grooming rods to remove compaction below the surface and leave a quasi-base to create a perfectly cushioned grip.

GROOMING RODS

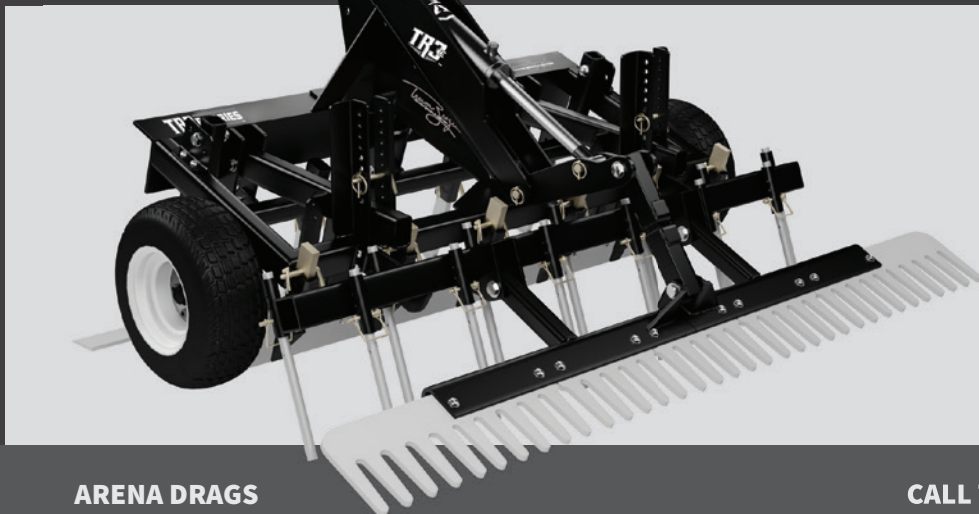
To pulverize compaction, set them just above the profile blade; to add texture and grip to the base, set them just below. The grooming rods are adjustable, long-wearing, and easy to replace.

FLOATING LEVELING BLADE

This blade auto-floats to catch high areas and deposits the material into low areas. Lock it into place for traditional cut-and-fill grading. Easy to use for operators of any skill level.

HYDRAULIC FINISH RAKE

From the tractor's seat, the hydraulic cylinder can raise the rear rake allowing the grooming rods to reach the back of the box. The rake is built with durable 1/2"-thick hardened steel, and an adjustable hydraulic flow valve is provided.



TR3-E Trevor Brazile Models

7'	890 lbs.	35 hp
8'	1,015 lbs.	45 hp



Expert Perspective

TREVOR BRAZILE

Champion Roper

"The horses that I'm competing with and against—there is no day off. They go like we go. It's all out. And if the footing is not right, it can be a catastrophe. I think one of the biggest improvements in our industry is how much the footing has changed and how much people have attributed injuries to bad ground and bad footing.

That spirit of always wanting to get better, always wanting to learn, that's what attracted me to ABI. I've combined all the technology and experience that ABI had at their fingertips with all the knowledge and experience that I've had roping in and out of the arena for the last twenty years all into one product - The TR3-E Series Trevor Brazile Edition."

**Call a Product Specialist at 877-788-7253
or Visit www.TR3ETrevorBrazile.com**

SPEEDMASTER

FASTER RUNS. SAFER GROUND. FAIR COMPETITIONS.

Designed for use in barrel racing, roping, and all other rodeo events, the ABI Speedmaster allows faster run times and helps protect horses and riders from injury. Offering ultimate control, the ABI Speedmaster is the only speed events arena drag that features independent hydraulically-controlled loosening, leveling, and adjustable grooming components.



**WE OUT-PERFORM OUR COMPETITORS
SO YOU CAN OUT-PERFORM YOURS**



UNCOMPROMISING 3-POINT DESIGN

The ABI Speedmaster is the first and only 3-point arena drag to empower the operator with independent hydraulic control of the scarifiers and leveling blade for precise results with no compromises. These features team up with five total ground-engaging components built to create fast ground for speed events.



INDEPENDENT COMPONENTS

The Speedmaster equips professional operators with independent control of all five ground-engaging components. This unparalleled capability empowers operators to customize footing speed, stability, grip, firmness, and cushion for each rodeo event, enabling contestants to feel confident on each run.

THE ULTIMATE DRAG FOR SPEED EVENTS



PROUD TO BE
THE OFFICIAL ARENA DRAG OF



(SHOWN WITH OPTIONAL EQUIPMENT)



CONSISTENT & REPEATABLE RESULTS

The cornerstone of a successful rodeo is fairness in competition. To ensure each run is fair, every horse must run on the same ground. The ABI Speedmaster replicates consistent ground between runs by watering, ripping, leveling, grooming, firming, and resetting the riding surface on each pass.



FAST, SAFE, & FAIR GROUND

The NFR uses the Speedmaster to create the fastest, safest, and most fair ground available. Like the NFR, every rodeo must invest in good ground to put on a successful show. The Speedmaster quickly produces the ultimate ground for speed events on every pass, minimizing stops between runs.

THIS DRAG CHANGES EVERYTHING

When our industry pioneers set out to design the ultimate drag for speed events, they didn't build just another drag. Instead, they created never-before-seen capabilities that changed the competitors definition of "good ground." After several years of proven success and widespread adoption among the most prominent competitions, the ABI Speedmaster has set a higher performance and safety standard in the rodeo industry.



GROUND ENGAGING COMPONENTS

1 PTO WATER SYSTEM

Quickly and evenly knock down dust and refresh the moisture content of your speed events arena. Includes a 110 gallon capacity tank.

2 HYDRAULIC RIPPERS

The double row of offset hydraulic rippers provides a variable shallow-to-deep ripping action that loosens any hardpan arena footing.

3 HYDRAULIC LEVELING BLADE

The exclusive leveling blade moves independently from the frame so the operator can level an arena without lifting the 3-point connection.

4 GROOMING RODS

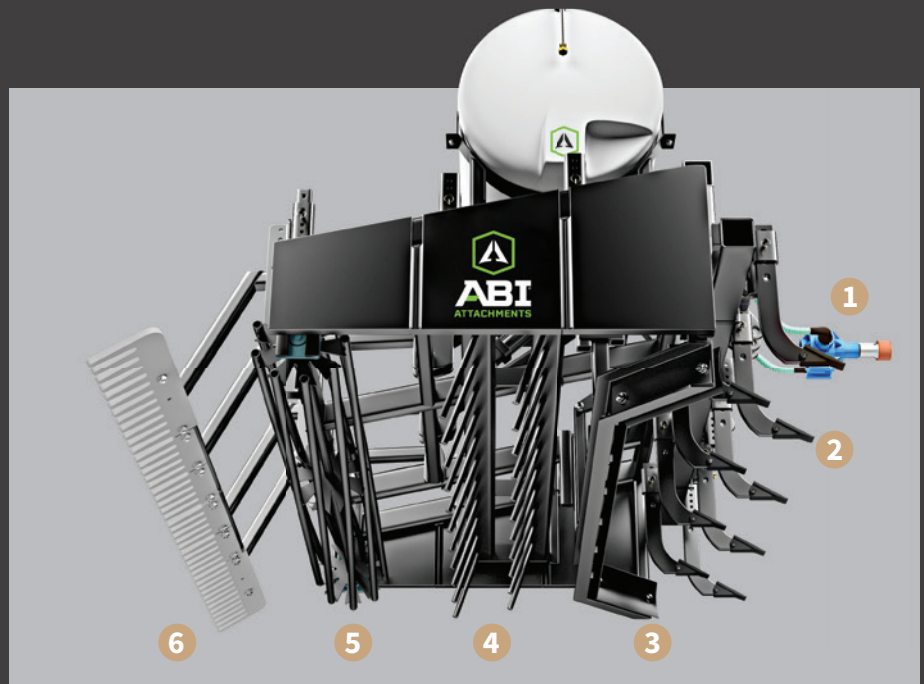
Two offset rows of replaceable grooming rods condition every inch of the footing to ensure ridge-free consistency.

5 ROLLING BASKET

Adjustable rolling basket pulverizes clumps and resets the arena below the surface, all while keeping the top inch loose to give horses the grip they need for speed.

6 FINISH RAKE

The manually-adjustable floating finish rake provides the final signature finish by smoothing out the top surface, eliminating small clumps, and filling in little holes or low spots.



SPEEDMASTER



(SHOWN WITH OPTIONAL EQUIPMENT)



Expert Perspective

RANDY SPRAGGINS

Owner of Special-T-Track

"There is quite a bit of pressure, setting up the footing for major events like NFR, The American, Professional Bull Riders Tour, and Helldorado Days. We rely heavily on our equipment to get the job done right to produce the footing that these athletes require to perform in these fast paced events.

I've been installing the ground for major events for several years and when it comes to the ABI Speedmaster, nothing is more reliable. Leveling, watering, ripping, and resetting the surface can all be done within a pass or two. That is all we have time for in between runs. The ABI Speedmaster manages all of that with ease and that is why we take it everywhere we go."

ABI Speedmaster

8'	2,180 lbs.	80 hp
----	------------	-------

**Call a Product Specialist at 877-788-7253
or Visit www.ABISpeedmaster.com**

DRAGMASTER

EXCELLENCE WITHOUT EQUAL. PERFORMANCE WITHOUT RIVAL.

Used and recommended by leading organizations, including the All American Quarter Horse Congress, Lazy E Arena, and many of the industry's top horsemen and events, the ABI Dragmaster is the world's premier arena drag. With the versatile features of the ABI Dragmaster, you can easily create proper depth, perfect moisture, and footing consistency to create a safe, consistent arena for training and competition.

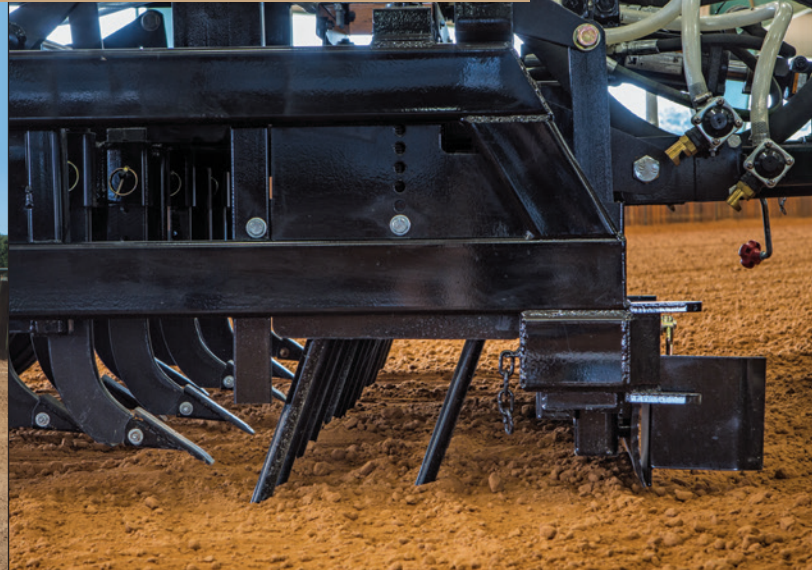


DESIGNED FOR CONSISTENT, MASTERFUL RESULTS



PULL-BEHIND GROUND PLANE DESIGN

The Dragmaster is a pull-behind towable type drag for superior consistency in leveling and grooming. The leveling blade is between the tractor and Dragmaster tires, like a motor grader, achieving a ground plane that enables precise footing leveling despite the tractor driving over rough or elevated areas.



INDEPENDENT COMPONENTS

The Dragmaster empowers professional operators with independent control of each ground-engaging component to perfect riding conditions during events. The leveling blade, scarifiers, and global depth control are hydraulic, while the grooming rods, profile blades, and finish drag bars are manual.

THE WORLD'S PREMIER ARENA DRAG



PROUD TO BE
THE OFFICIAL ARENA DRAG OF



(SHOWN WITH OPTIONAL EQUIPMENT)



CONSISTENT & REPEATABLE RESULTS

The heart of the Dragmaster is the four hydraulically controlled wheels, providing transport in and out of the arena. This system controls global ground-engagement working depth with fine-tune precision adjustment and lockable max depth to ensure consistent and repeatable results.

FULLY CUSTOMIZABLE

The ABI Dragmaster can be configured in many ways to match your arena's moisture management system, footing consistency, amount of use, type of discipline, and more. From water-free models to fully-kitted 16' models with dual laser system and 500-gallon water tank, the Dragmaster is up to the task.

ENGINEERED FOR EXCELLENCE

Years of effort, expertise and dedication went into perfecting the ABI Dragmaster. From front to back, it's the most configurable, versatile, and masterful arena drag on the market. Many arena drags are adapted from a farm implement mindset, but the Dragmaster is engineered from the ground up to prepare footing to achieve the exact specifications needed by industry-leading events and equestrians around the world.



CUSTOMIZABLE COMPONENTS

1 HYDRAULIC LEVELING BLADE

Used to maintain consistent footing depth and equalize high and low areas across the arena. Level your arena automatically with the optional laser system.

2 GROOMING RODS

The two rows of adjustable grooming rods loosen material, and are designed to incorporate the Dragmaster's water into the footing.

3 HYDRAULIC SCARIFIERS

The hydraulic scarifier bar breaks up the hardest compacted material. The bar is independently adjustable for easy engagement or disengagement. Replaceable tips are made from a hardened, wear-resistant steel.

4 PROFILE BLADES

The profile blades can loosen 100% of the arena footing with every pass. These patented blades slice through material from the bottom up, not the top down, to eliminate all the ridges in the footing.

5 300 & 500 GALLON PTO WATER SYSTEM

The Dragmaster has the largest watering system available on any arena drag. The variable-output PTO-driven pump allows precision control from the tractor seat in a 300 or 500 gallon size. The Dragmaster can be fitted with or without a water system.

6 FINISHING DRAG BARS

Designed to leave a competition-level loosened finish while filling in any remaining small holes, the bars can be adjusted to apply the desired amount of pressure to the footing.





Expert Perspective

SHAWN FLARIDA

Champion Reiner

"I rely on the ABI Dragmaster day in and day out to keep my ground properly prepared for all of my practice. And since so many top shows use ABI products, my horses feel right at home on the footing.

I've been in this industry for a long time, and I appreciate the care ABI puts into their products in keeping me and my horses safe and sound to keep on performing at the highest level!"

ABI Dragmaster® Models

8'	2,800 lbs.	45 hp
10'	3,406 lbs.	55 hp
12'	4,093 lbs.	65 hp
16'	4,760 lbs.	105 hp

**Call a Product Specialist at 877-788-7253
or Visit www.ABIDragmaster.com**

DRAGMASTER

CUSTOMIZE FOOTING PERFORMANCE TO EXCEED EXPECTATIONS

The ABI Dragmaster is designed to be customized to suit your footing needs. Equip your model based on your moisture management system, your climate, your footing consistency, your discipline, and more. This capability empowers event promoters and facility operators to keep competitors happy and returning for the next event. Every equestrian and facility operator sets up their Dragmaster a little differently, but one thing remains the same: the ABI Dragmaster is always up to the task.



TOP-OF-THE-LINE RESULTS, EVERY TIME

The ABI Dragmaster's innovative pull-behind ground-plane design makes it easy to always get your preferred footing. Once you've dialed in the engagement depth of each ground-engaging component, use the stop collars and fine adjustment nut on the main hydraulic cylinder to "lock in" that position so any operator can drag at the exact depth you want. Facility operators will appreciate repeatable results and precision control by turning the infinite fine adjustment nut to globally increase or decrease the grooming depth of all components for different disciplines or arena requirements during events.



ADDITIONAL EQUIPMENT OPTIONS

RAIL BLADE

Every arena experiences footing displacement. The rail blade rides along the edge of your arena and guides footing back into the path of the hydraulic leveling blade for even distribution across the arena.

SPRAY HOSE

Use it to clean panels and fencing, wash down your tractor and drag, or apply water to hard-to-reach areas like corners and entry areas. Long enough to be safely operated from the tractor seat.

LASER SYSTEM

The laser system ensures perfectly-consistent footing depth from one end of the arena to the other. Optional laser packages are specially configured to provide everything needed to maintain a level grade and consistent footing depth.

NATURAL ARENA DRAGS COMPARISON

	MULTI-PURPOSE ARENA DRAGS			COMPETITION ARENA DRAGS		
	Arena Rascal Pro	TR3-E Equine Edition	TR3 Rake	TR3-E Trevor Brazile	ABI Speedmaster	ABI Dragmaster
Price Range	\$\$\$\$	\$\$\$\$	\$\$\$\$	\$\$\$\$	\$\$\$\$	\$\$\$\$
TOW VEHICLE						
Ltd CAT1, Tractor	w/Option	✓ (6')	-	-	-	-
CAT1, Tractor	w/Option	✓	✓	✓	-	-
CAT 2, Tractor	-	-	✓ (8.5', 10')	-	✓	-
Tractor Towed	✓	-	-	-	-	✓
ATV / UTV	✓	-	-	-	-	-
Power Range (4WD)	400+ cc, 20–40hp	24–66hp	26–115hp	35–66hp	80–150hp	65–200hp
SIZES						
Widths	4.5', 5.5', 6.5', 7.5'	6', 7', 8'	5.5', 6.5', 7.5', 8.5', 10'	7', 8'	8'	8', 10', 12', 16'
FEATURES						
Profile Blades	✓	✓	w/Option	✓	-	✓
Manual Scarifiers	✓	✓	✓	✓	-	-
Hydraulic Scarifiers	-	-	-	-	✓	w/Option
Auto-Float Grading Blade	-	✓	✓	✓	-	-
Hydraulic Grading Blade	-	-	-	-	✓	✓
Grooming Rods	-	✓	-	✓	✓	✓
Fixed Finish Rake	-	-	✓	-	-	-
Adjustable Finish Rake	✓	✓	-	✓	-	-
Floating Finish Rake	-	-	w/Option	-	✓	-
Rolling Basket	-	-	w/Option	-	✓	-
Hydraulic Rake	-	-	-	✓	-	-
Laser System	-	-	-	-	-	w/Option
PTO Water System	-	-	-	-	✓	w/Option
Disc System	w/Option	w/Option	w/Option	w/Option	-	-
WARRANTY						
Farm & Ranch	60 Months	60 Months	60 Months	60 Months	36 Months	36 Months
Commercial	12 Months	12 Months	36 Months	12 Months	12 Months	12 Months



Expert Perspective

DAN WALL

General Manager, The Lazy E Arena

“At the Lazy E Arena, we’re known for our world-class speed and timed events, and we need to ensure our competitors that the playing field is level. We trust the ABI Speedmaster, ABI Dragmaster & TR3-E Trevor Brazile Edition drags to quickly and consistently create the best possible footing conditions for each and every competitor at the Lazy E.”

SYNTHETIC ARENA DRAGS

A GROOMER FOR EVERY ADDITIVE

It's no secret that your horse can only give their best if the footing they're trained and conditioned on is secure. For riders and trainers who use synthetic materials in their footing, arena surface grooming is what keeps that footing high quality, so you can elevate horse-rider harmony, protect your horse's health, and ensure you're getting the best performance, every time.

Which is why ABI Attachments has partnered with Premier Equestrian to meticulously craft a durable, dependable synthetic footing drag, engineered to create professional-level results. Introducing the ABI SportPro - Premier Equestrian Edition. The SportPro line of groomers was designed with equestrians and their horses at the forefront, and we have a configuration to get the results you require—no matter what kind of synthetic additives you're working with.

WHAT CAN THE SPORTPRO DO IN MY ARENA?

- 1 Install - Why pay someone to do what you can do yourself?
- 2 Renovate - Does your arena need a serious restoration?
- 3 Maintain - Is your current groomer getting the exact surface tension you're looking for?
- 4 Condition - Do you need to be able to change the surface tension of your footing?

ABI SPORTPRO - PREMIER EQUESTRIAN EDITION



SPORTPRO M1

For smaller ATVs, zero turn mowers, or utility golf carts that have a rear hitch, the M1's unique structure is made to perfectly suit the requirements for your specific arena moisture and additives.



SPORTPRO M3

With a range of possible configurations for you to choose from, including 67.5" and 83.5" widths, the M3 comes fitted with a single-point pin or optional ball coupler connection and wheel transport system for easy connect-and-go convenience.



SPORTPRO M5

For tractors with a 3-point hitch, the M5 comes fitted with a patent pending, auto-locking swivel hitch that precisely follows the turns of the tractor around jumps and rails, but straightens itself before locking when lifted. Available in 67.5" and 83.5" widths.



“IT’S EASY TO SEE THE DIFFERENCE
IN EFFICIENCY AND CRAFTSMANSHIP
BETWEEN THE SPORTPRO AND OTHER
GROOMERS I’VE USED IN THE PAST.”

ADRIENNE LYLE
Olympic US Dressage Rider

GET A PERFECT FIT FOR YOUR ARENA

YOUR GROOMER. YOUR FOOTING. YOUR WAY.

Your synthetic footing groomer should be intentionally suited to perfectly blend, level, and smoothen your arena surface. The SportPro M5 and M3 groomers have four default components that you can add to or swap out, based on your arena surface grooming needs.



CHOOSE MIXING OR LOOSENING—OR BOTH



S-TINES

If you have a limited amount of water in your arena or your additives require frequent mixing, the Danish-style S-tines will provide holistic blending for your everyday grooming. S-tines offer a safer way to go deeper, pulling up small fines and fibers that have settled to the bottom. S-tines are also suited for self-amending or self-installing additional materials or fibers.



SCARIFIERS

Arenas with high clay, high fiber, or more water will benefit from the scarifiers as the primary component. In contrast to the S-tines, scarifiers are rigid by design, giving them an enhanced ability to loosen hard, compacted materials. For arenas that would benefit from the capabilities of both, the SportPro groomer allows the operator a toolless swap out of the S-tines and scarifiers.

CHOOSE A SINGLE OR DOUBLE ROLLER CONFIGURATION

The twisted rod design maximizes packing and prevents trailing so you can count on an elegant finish over your arena surface. One of the key benefits of the twisted rods is constant contact with the surface, which minimizes bouncing while grooming. Both the M3 and the M5 can have either a single or double rollers. On the dual roller models, the front and back rollers add an additional level of gauge security and consistency, so you can drop and groom without worrying about catching on your base.



CHOOSE THE RIGHT SIZE FOR YOUR ARENA

Both the M3 and the M5 come in two width options, 67.5" and 83.5". Facilities with larger arenas and more storage space may want the larger options to get more coverage over the footing. However, for those who need a smaller implement, whether because of space, pulling power, or budget, the 67.5" M3 and M5 models pack just as much of a punch when it comes to the grooming results you'll get.



(PRODUCTS SHOWN WITH OPTIONAL EQUIPMENT)

SPORTPRO M5

GROOM TO PERFECTION

A BETTER RIDE IS JUST ONE ATTACHMENT AWAY.

Your synthetic footing groomer should be intentionally suited to perfectly blend, level, and smoothen your arena surface. SportPro groomers are built with extended space between each component from front to back; this innovative setup maximizes the flow of footing material creating the comprehensive blending needed for daily maintenance. Each ground-engaging component on a SportPro groomer is independently adjustable so you can configure your implement to perfectly groom your specific arena and achieve your footing performance expectations. This includes daily maintenance, periodic re-mixing, and changing the surface tension for conditioning.



ALL ADDITIVES WELCOME



NO MATTER YOUR DISCIPLINE

Whether you ride in English sports, Western pleasure, or some combination of both, the SportPro was designed with independently adjustable ground engaging components so you can configure your implement to perfectly groom your specific arena and achieve your footing performance expectations.



CHANGING THE SURFACE TENSION

Once the groomer is set for everyday use for your arena, you can lock the tool into a passive setting, so you can count on consistent, repeatable results, no matter who's in the driver's seat. Then, adjust the components as needed into an active grooming position when you need to re-mix your footing or change the surface tension for conditioning.

PATENT PENDING AUTO-LOCKING SWIVEL HITCH GROOMER



(SHOWN WITH OPTIONAL EQUIPMENT)



NO TOOLS REQUIRED

It is not uncommon for arenas to benefit from the capabilities of both scarifiers and S-tines. It shouldn't be a hassle for you to have the unique capabilities of an aggressive ground engaging component and a springy one; which is why the SportPro M5 allows the operator a toolless swap out between scarifiers and S-tines.

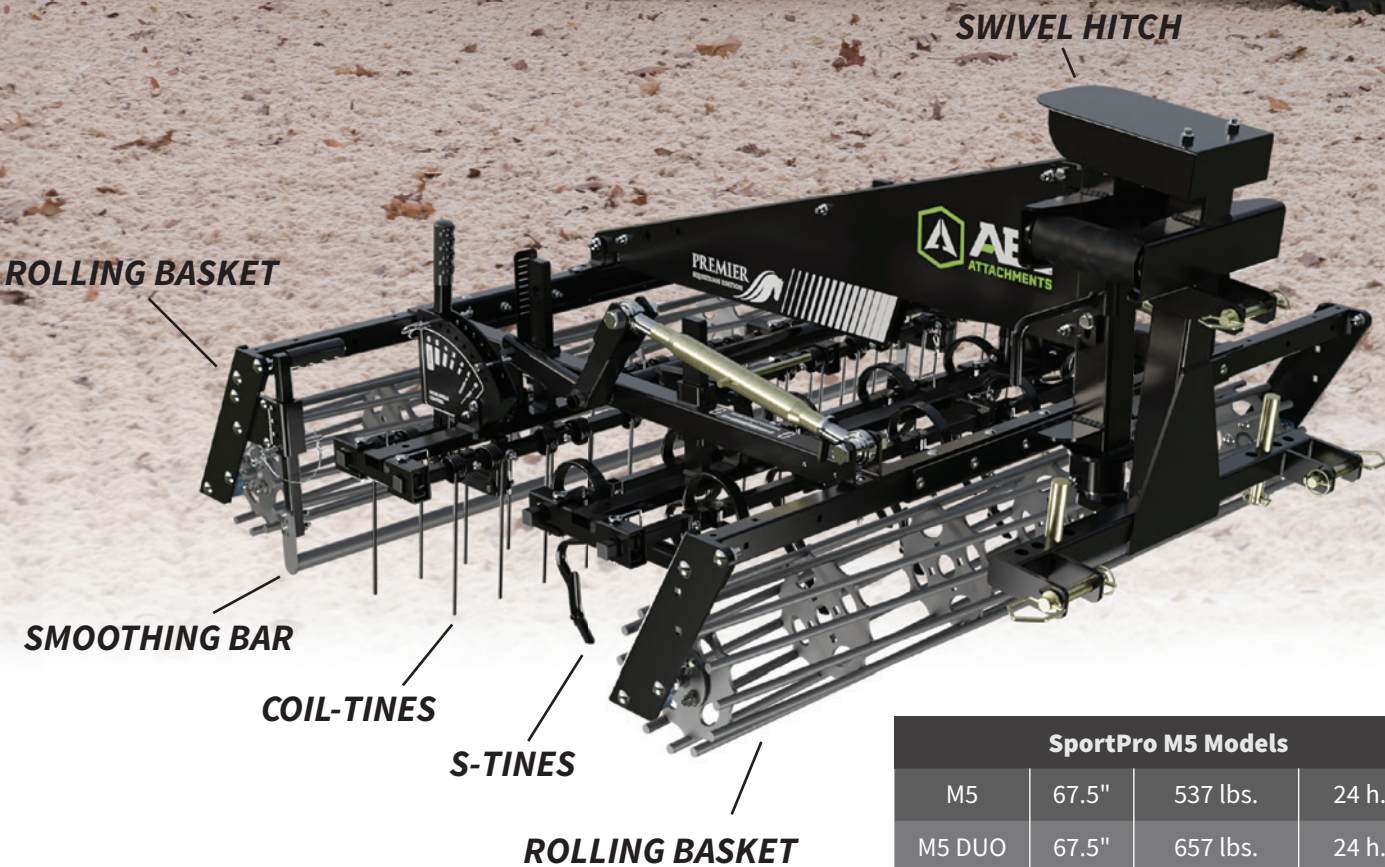


AVOID BUILD UP

The cylinder shape of the smoothing bar allows material to flow under as well as over— creating a smoothing effect under the bar, and preventing excess material from plugging up. The tough steel frame is built without a shell for increased visibility so you can stop build up before it becomes an issue.

THE NO-HASSLE GROOMER

For tractors with a 3-point hitch the SportPro M5 groomers come fitted with a patent pending swivel hitch that precisely follows the turns of the tractor around jumps and rails, but straightens itself before locking when lifted. This auto-locking swivel hitch also enhances safety and reduces hassle when pulling in and out of the arena.



OPTIONAL EQUIPMENT

RAIL BLADE

To get those tough-to-reach edges, add the optional rail blade. The rail blade lets you maneuver with ease around the trickiest spots in your arena.

WALL WHEEL

For extra kick wall protection when leveling the edges of your arena, get the optional wall wheel add on.

SportPro M5 Models			
M5	67.5"	537 lbs.	24 h.p.
M5 DUO	67.5"	657 lbs.	24 h.p.
M5 X	83.5"	574 lbs.	32 h.p.
M5X DUO	83.5"	695 lbs	32 h.p.



PATENT PENDING

Expert Perspective



ADRIENNE LYLE

Olympic US Dressage Rider

“The care and safety of my horses are top priority for me. Any equine professional will tell you horses cannot perform their best if they aren't working in a good environment or if the footing is inconsistent or not level. When it comes to the training in my arenas, a huge part of keeping the horses in top shape is the grooming of the footing. Which is why I'm really excited to be using the ABI SportPro - Premier Equestrian Edition in my arenas.

This piece of equipment has been intentionally crafted with equestrians in mind. The SportPro has more space in between each element so the material in the arenas doesn't get stuck and can get properly mixed. The rollers and smoothing bars create the level of compaction I'm looking for. It's easy to see the difference in efficiency and craftsmanship between the SportPro and other groomers I've used in the past. This tool is way better than anything I've ever used and I'm so excited to be using it here at TYL Dressage.”

**Call a Product Specialist at 877-788-7253
or Visit www.ABISportPro.com**

SPORTPRO M3

EASY CONNECT-AND-GO HOOKUP

GROOMING YOUR ARENA DOESN'T NEED TO BE COMPLICATED.

For larger ATVs and UTVs, the SportPro M3 groomers come fitted with a single-point pin or optional ball coupler connection and wheel transport system for easy connect-and-go convenience.



ELEVATE YOUR ARENA

(SHOWN WITH OPTIONAL EQUIPMENT)



NO MATTER YOUR DISCIPLINE

Whether you ride in English sports, Western pleasure, or some combination of both, the SportPro was designed with independently adjustable ground engaging components so you can configure your implement to perfectly groom your specific arena and achieve your footing performance expectations.

CHANGING THE SURFACE TENSION

Once you have the groomer configured for everyday use for your arena, lock the tool into a passive setting, so you can count on consistent, repeatable results, no matter who's in the driver's seat. Then, adjust the components as needed into an active grooming position when you need to re-mix the additives in your footing or change the surface tension for conditioning.

OPTIONAL EQUIPMENT

RAIL BLADE

To get those tough-to-reach edges, add the optional rail blade. The rail blade lets you maneuver with ease around the trickiest spots in your arena.

WALL WHEEL

For extra kick wall protection when leveling the edges of your arena, get the optional wall wheel add on.

THE FULLY FEATURED, PULL-BEHIND SYNTHETIC GROOMER



(SHOWN WITH OPTIONAL EQUIPMENT)



NO TOOLS REQUIRED

It is not uncommon for arenas to benefit from the capabilities of both scarifiers and S-tines. It shouldn't be a hassle for you to have the unique capabilities of an aggressive ground engaging component and a springy one; which is why SportPro allows the operator a toolless swap out between scarifiers and S-tines.



AVOID BUILD UP

The cylinder shape of the smoothing bar allows material to flow under as well as over— creating a smoothing effect under the bar, and preventing excess material from plugging up. The tough steel frame is built without a shell for increased visibility so you can stop build up before it becomes an issue.

**Call a Product Specialist at 877-788-7253
or Visit www.ABISportpro.com**

SportPro M3 Models			
M3	67.5"	600 lbs.	400 cc
M3 DUO	67.5"	717 lbs.	400 cc
M3 X	83.5"	658 lbs.	570 cc
M3X DUO	83.5"	779 lbs	570 cc

SPORTPRO M1

NO TOW VEHICLE LEFT BEHIND

SMALL VEHICLES CAN GET IMPRESSIVE RESULTS.

UTVs, ATVs, golf carts, even lawn mowers— if you need a groomer for a less powerful vehicle, the SportPro M1 is the attachment for you. This pared down version of the M3 is the perfect pull-behind for smaller vehicles or tighter budgets. Get professional level results no matter your tow vehicle or type of synthetic footing.



GROUND-ENGAGING COMPONENTS



S-TINES

The Danish-style S-tines act intuitively in synthetic footing, their springy give loosens and mixes material without causing damage to the base. S-tines offer a safer way to go deeper, pulling up small fines and fibers that have settled to the bottom. S-tines are also suited for self-amending or self-installing additional materials or fibers.



SMOOTHING BAR

The smoothing bar is adjustable in quarter inch increments for maximum precision adjustment; it allows for some build up to accumulate so it can level out any excess material while filling remaining lines or grooves. The cylinder shape allows material to flow under as well as over—creating a smoothing effect under the bar, and preventing excess material from plugging up.



TWISTED ROD ROLLER

The twisted rod design of the SportPro roller maximizes packing and minimizes trailing so you can count on an elegant finish over your arena surface. One of the key benefits of the twisted rods is constant contact with the surface, which minimizes bouncing while grooming.

THE BEST GROOMER FOR LITTLE TOW VEHICLES



SportPro M1

67.5"	447 lbs.	350 cc
-------	----------	--------

OPTIONAL EQUIPMENT



RAIL BLADE

To get those tough-to-reach edges, add the optional rail blade. The rail blade lets you maneuver with ease around the trickiest spots in your arena.



WALL WHEEL

For extra kick wall protection when leveling the edges of your arena, get the optional wall wheel add on.

Call a Product Specialist at 877-788-7253
or Visit www.ABISportPro.com

WATER TRAILERS

GET LARGE VOLUMES OF WATER WHERE YOU NEED IT

Water is one of the fundamental building blocks of life, and we've all experienced the problems that occur when water is not accessible when we need it. That's why a water distribution plan is critical to the success of your homestead and equine operations. Our water trailers provide the most versatile method of distributing large volumes of water to multiple locations around your property, from your well, pond, creek, rain cistern, or city hydrant.

With dozens of available configurations, we have a water trailer to suit your tow vehicle, water access, climate, livestock needs, and other applications for use. For horse and riding arena owners, water ensures your arena footing is stable and safe while keeping unhealthy dust at bay; it's the glue that holds your arena footing together. With an ABI water trailer at the center of your water distribution plan, you have water access anywhere you need it and arena footing optimized for peak performance.

4 TOP USES FOR AN ABI WATER TRAILER

- 1 **FOOTING PERFORMANCE** - horse arena riding surface shear stability
- 2 **DUST ABATEMENT** - horse arenas, gravel driveways, and dirt areas
- 3 **WATERING** - troughs, tree plantings, pastures, and food plots
- 4 **WASHING** - livestock stalls, machinery, and water for pressure washers

VERSATILE WATER TRAILERS MODELS



FARM & RANCH COMPACT
340 & 550 GALLON CAPACITIES, 1-AXLE

Our compact water trailers are ideal for hobby and horse farms that run a smaller tow vehicle. The 340 works behind UTVs and sub-compact tractors (on even ground), while the 550 works behind compact tractors.



FARM & RANCH COMMERCIAL
500, 1000, & 1600 GALLON CAPACITIES, 2-AXLES

Our farm and ranch water trailers are ideal for commercial farms and equestrian facilities. They can be towed with a tractor or pickup truck, configured with a white or black tank, and you can choose powered or gravity water distribution.



D.O.T. ON-ROAD COMMERCIAL
500, 1000, & 1600 GALLON CAPACITIES, 2-AXLES

Our D.O.T. on-road water trailers are ideal for hauling water over public roadways. The 500 is towed behind a 1/2-Ton truck, 1000 a 3/4-Ton, and 1600 a 1-Ton. You can also configure for powered spray or potable drinking water.

“ABI PRODUCTS NEVER LET US DOWN SO WE CAN CONTINUE TO PERFORM AT OUR BEST.”

DAN JAMES
Liberty & Reining



WATER TRAILERS

QUALITY THAT SHOWS

Every ABI Water Trailer is built to safely and effectively transport and apply large volumes of water for a variety of applications. Available in either DOT-approved for roadway models or farm/private property only models. These trailers can be equipped with a powered spray system or a black tank and spigot to transport potable drinking water. Available in 340, 500, 550, 1000, and 1600 gallon capacities and eight axle configurations, the ABI Water Trailer has many configurations to deliver the features you need for the jobs you need to get done.



BUILT FOR DEPENDABLE, LONG-LASTING USE



PURPOSE-BUILT STEEL FRAME

We design and build our frames from fully-welded steel, have an adjustable hitch with a choice of coupler, feature leaf-spring or torsion suspension (excludes 340 gal.), and come with electric brakes on all D.O.T. and 1600 gallon models.



FULL-DRAIN CUSTOM-MOLDED TANKS

Our custom-molded tanks are designed to minimize sloshing and drain fully for easy cleaning. Choose between a white tank for easy water filling visibility or a black tank (on some models) to reduce algae growth during water storage.

AMERICA'S FAVORITE WATER TRAILERS



(SHOWN WITH OPTIONAL EQUIPMENT)



MOTOR, PUMP, & PLUMBING SYSTEM

The available motor, pump, and plumbing systems enable volume water application. The entire plumbing system is equipped with the best quality valves and the ability to adjust water pressure and flow from the engine, the valves, or a combination of the two.



SPRAY SYSTEM & BRASS NOZZLES

The available rear spray system with brass nozzles and adjustable valves is designed to ensure consistent application of water to the ground. Full-size water trailers are available with three nozzles on a steel spray bar, the 550 model has two nozzles, and the 340 model has one nozzle.

DESIGNED TO MAXIMIZE VERSATILITY

Our complete line of ABI Water Trailers excels at arena moisture management, dust abatement, plant watering, cleaning equipment, fire protection, transporting potable water, and more. With fast and convenient filling capabilities, easy-to-use hoses and spray nozzles, and a full-drain tank on our custom-built frames, our water trailers are easy to fill, operate, and own. Whatever is on your list of jobs to accomplish with your water trailer, we've loaded them with thoughtful features that help you get them done quicker and better than before.



LOADED WITH CONVENIENT FEATURES



POWERFUL SPRAY HOSE

The spray hose is perfect for cleaning projects, watering landscaping, filling troughs, and countless other applications. The hoses feature quick couplers and store conveniently on the trailer.



EASY ON/OFF FLOW CONTROL

A ratcheting valve and attached rope enable the operator to turn the flow of water on and off without getting off of the tractor or UTV. Prevents over-watering at the ends of an arena while turning around. Add the optional electric on/off control for use inside a truck.

WATER TRAILERS

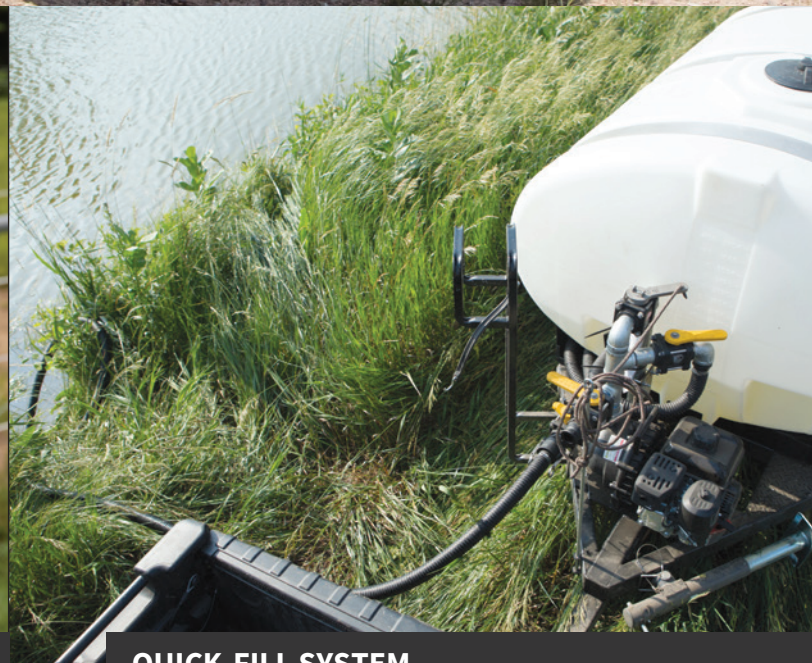


(SHOWN WITH OPTIONAL EQUIPMENT)



AUTO-FILL SHUT OFF

This valve automatically shuts off the flow of water from a garden hose when the tank is full, saving time and worry. Now you can fill the tank overnight or continue on with your day's work, and the trailer will be full and ready to spray when you are.



QUICK-FILL SYSTEM

For water trailers equipped with a motor and pump, the available quick-fill system allows easy filling of the tank from a pond or other available water source in mere minutes.

FARM & RANCH

ABI Water Trailer frames are engineered specifically for water-carrying demands. Available in 340 and 550 gallon compact and 500, 1,000, and 1,600 gallon full-size commercial capacities. Engine powered, with a poly-pump, 2" plumbing, and high-quality valves. The rear spray nozzles are brass, and the valves are fully adjustable to customize water output and flow rate to suit almost every situation.

WATER TRAILER MODELS — 340, 500, 550, 1000, & 1600



340 GAL. COMPACT



550 GAL. COMPACT



1000 GAL.

ROAD READY D.O.T.

Complete with electric drum brakes, taillights, fenders, and a VIN, ABI DOT-approved Water Trailers are perfect for safe and reliable water transport on and off public roadways. The fully-welded steel frame is built for carrying water on and off roadways. Engine powered, with a poly-pump, 2" plumbing, and high-quality valves. The spray nozzle is brass, and all valves are fully adjustable to customize water output and flow rate. Also available in a black-tank option for transporting and storing potable water.

WATER TRAILER MODELS — 500, 1000, & 1600



500 GAL. D.O.T. POTABLE



1000 GAL. D.O.T.



1600 GAL. D.O.T.

Call a Product Specialist at 877-788-7253
or Visit www.ABIWaterTrailers.com

WATER TRAILERS COMPARISON

	COMPACT FARM & RANCH		COMMERCIAL FARM & RANCH			COMMERCIAL ON ROAD D.O.T.		
	340C	550C	500	1,000	1,600	500 DOT	1000 DOT	1600 DOT
TRAILER CONSTRUCTION								
GVWR Axle Rating	3,500 lbs.	6,000 lbs.	8,500 lbs.	10,400 lbs.	18,000 lbs.	8,500 lbs.	10,400 lbs.	18,000 lbs.
Unit Weight (Empty)	661 lbs.	1,135 lbs.	1,700 lbs.	1,900 lbs.	2,700 lbs.	1,700 lbs.	1,900 lbs.	2,700 lbs.
Loaded Weight (w/Water)	3,498 lbs.	5,725 lbs.	5,875 lbs.	10,150 lbs.	16,420 lbs.	5,875 lbs.	10,150 lbs.	16,420 lbs.
Compact Construction	✓	✓	-	-	-	-	-	-
Commercial Construction	-	-	✓	✓	✓	✓	✓	✓
1 Axle	✓	✓	-	-	-	-	-	-
2 Axles	-	-	✓	✓	✓	✓	✓	✓
Suspension	-	Torsion	Leaf Spring	Leaf Spring	Leaf Spring	Leaf Spring	Leaf Spring	Leaf Spring
Electric Brakes	-	-	-	-	✓	✓	✓	✓
Fenders	-	-	-	-	✓	✓	✓	✓
Brake & Tail Lights	-	-	-	-	-	✓	✓	✓
Tire Type	Radial	Radial	Implement	Implement	Radial	Radial	Radial	Radial
Trailer Frame Type	Tube Steel	Formed Channel	C-Channel	C-Channel	C-Channel	C-Channel	C-Channel	C-Channel
36 Month Limited Warranty	✓	✓	✓	✓	✓	✓	✓	✓
WATER TANK CONFIGURATIONS								
Water Capacity	340 Gallons	550 Gallons	500 Gallons	1,000 Gallons	1,600 Gallons	500 Gallons	1,000 Gallons	1,600 Gallons
Full Drain Tank	✓	✓	✓	✓	✓	✓	✓	✓
Deep Drainage Sump	✓	✓	✓	✓	✓	✓	✓	✓
Black Tank Option	-	-	✓ - Option	✓ - Option	✓ - Option	✓ - Option	✓ - Option	✓ - Option
ENGINE CONFIGURATIONS								
XR950 Briggs & Stratton (5.8hp / 208cc)	-	-	✓ - Option	✓ - Option	✓ - Option	✓ - Option	✓ - Option	✓ - Option
GC160 Honda Motor (4.6hp / 160cc)	✓	✓	✓ - Option	✓ - Option	✓ - Option	✓ - Option	✓ - Option	✓ - Option
GX160 Honda Motor (4.8 hp / 163cc)	-	-	✓ - Option	✓ - Option	✓ - Option	✓ - Option	✓ - Option	✓ - Option
PUMP CONFIGURATIONS								
2" Self-Priming Centrifugal Poly Pump	✓	✓	✓ - Option	✓ - Option	✓ - Option	✓ - Option	✓ - Option	✓ - Option
PLUMBING CONFIGURATIONS								
AutoFill Shutoff - Garden Hose	✓	✓	✓	✓	✓	✓	✓	✓
Recirculation System	✓	✓	✓ - Option	✓ - Option	✓ - Option	✓ - Option	✓ - Option	✓ - Option
1 Rear Spray Nozzle	✓	-	-	-	-	-	-	-
2 Rear Spray Nozzles	-	✓	-	-	-	-	-	-
3 Rear Spray Nozzles	-	-	✓ - Option	✓ - Option	✓ - Option	✓ - Option	✓ - Option	✓ - Option
On/Off Flow Control Ratchet Valve	✓	✓	✓ - Option	✓ - Option	✓ - Option	✓ - Option	✓ - Option	✓ - Option
Spray Hose & Nozzle	✓	✓	✓ - Option	✓ - Option	✓ - Option	✓ - Option	✓ - Option	✓ - Option
Pond Fill System	✓ - Option	✓ - Option	✓ - Option	✓ - Option	✓ - Option	✓ - Option	✓ - Option	✓ - Option
REAR WATER SPRAY								
Spray Swath	3' - 12'	6' - 20'	6' - 25'	6' - 25'	6' - 25'	6' - 25'	6' - 25'	6' - 25'
Max Gallons Per Minute (GPM)	86	115	140	140	140	140	140	140
TOW VEHICLE REQUIREMENTS								
Off Public Roadway Use	✓	✓	✓	✓	✓	✓	✓	✓
On Public Roadway Use (D.O.T.)	-	-	-	-	-	✓	✓	✓
Tow Vehicle Type	Large UTV / Compact Tractor	Compact Tractor	Tractor or 1/2-Ton Truck	Tractor or 3/4-Ton Truck	Tractor or 1-Ton Truck	1/2-Ton Truck	3/4-Ton Truck	1-Ton Truck
Minimum Vehicle Requirements	Min. Weight: 1,500 lbs. On Flat Ground Towing Capacity: 3,300 lbs. On Uneven Terrain	Min. Weight: 2,400 lbs. On Flat Ground Towing Capacity: 5,200 lbs. On Uneven Terrain	Min. Vehicle Towing Capacity: 5,900 lbs.	Min. Vehicle Towing Capacity: 10,200 lbs.	Min. Vehicle Towing Capacity: 16,020 lbs.	Min. Vehicle Towing Capacity: 5,900 lbs.	Min. Vehicle Towing Capacity: 10,200 lbs.	Min. Vehicle Towing Capacity: 16,020 lbs.

MANURE SPREADERS

THE ESSENTIAL TOOL FOR MANURE MANAGEMENT

Manure management is a critical requirement for a healthy and pest-free farm or ranch. Proper manure management goes beyond stall picking, composting, and spreading. In fact, it extends into the pasture and paddock areas of the property as well. When choosing a manure spreader to protect livestock and soil health, it's imperative to consider how well a spreader shreds manure, controls manure application flow, and evenly applies manure to the ground.

ABI Manure Spreaders are uniquely engineered with advanced features to shred and pulverize manure before it's spread. Also, 4-speed variable flow controls the application spread of pulverized manure to the land. These advanced features are essential for landowners on limited acreage or when spreading on pastures and paddocks as they reduce farm odor, flies, and parasites while improving soil health overall.

4 BENEFITS OF AN ABI MANURE SPREADER

- 1 Spread stall-picked or composted manure on fewer acres to build soil
- 2 Work with all types of horse and livestock manure and bedding
- 3 Shred and spread manure to reduce flies, odor, and parasites
- 4 Avoid hassle day-in and day-out for years to come

BETTER PASTURES ARE JUST A SPREAD AWAY



COMPACT MANURE SPREADERS

We offer four compact manure spreader models. There are three ground-driven models (25, 50, & 65 ft³) and one PTO-driven model (50 ft³). Depending on the model, these are towed by a lawn mower, ATV, UTV, sub-compact tractor, or compact tractor.



COMMERCIAL MANURE SPREADERS

We offer four commercial manure spreader models. There are three PTO-driven models (85, 125, & 185 ft³) and one ground-driven model (85 ft³). Depending on the model, these are towed by a compact or utility tractor.

“WHETHER YOU’VE GOT
TWO HORSES OR UP TO
THIRTY-FIVE HORSES,
ABI HAS A SPREADER
FOR YOU.”

CLINTON ANDERSON
Horsemanship & Reining



MANURE SPREADERS

A BETTER WAY TO MANAGE MANURE

We designed our family of manure spreaders to do more than simply get rid of manure—they are intentionally engineered to be better for your horses, your stables, and your pastures. Our spreaders work better, last longer, and elevate the health of your land.

Industry-Leading Limited Warranties:

- 3 year mechanical
- 10 year apron chain and construction
- Lifetime poly-lumber flooring



ENGINEERED TO SPREAD BETTER

2-STAGE INLINE SHRED & SPREAD SYSTEM

The 2-stage inline shred and spread system pulverizes and evenly spreads manure so it quickly decomposes, helping ensure healthy pastures. Unlike our competitors, our shredding system is inside the spreader bed, not on top of it. This design shreds the middle of the manure flow and feeds manure into the primary spreading system for superior results. When manure is shredded before it's spread, it spreads more evenly and finely across your pasture, encouraging much faster turn rates.



BUILT TOUGHER TO LAST LONGER



(SHOWN WITH OPTIONAL EQUIPMENT)

4-SPEED APPLICATION FLOW CONTROL

ABI Manure Spreaders employ an industry-exclusive 4-speed manure application flow control, which feeds manure to the rear 2-stage shred and spread system, controlling manure flow to spread evenly on the ground.

- 1 Control Manure Application:** If spreading on crop fields, set the flow to empty as fast as possible; if spreading on pastures, slow down the flow to apply a controlled manure application.
- 2 Enable Faster Pasture Turns:** A light application rate of finely shredded manure will expose more manure surface to sunlight, killing fly larvae and parasites while decomposing more quickly.
- 3 Spread All Types of Manure:** Spread all livestock manure types, bedding materials, stall-picked or composted, dry or rained upon manure.



BUILT TO OUTLAST THE BARN

Our spreaders aren't shiny like your kitchen appliances for good reason: stainless steel tends to be less structurally sound as COR-TEN. Our spreaders are fully-welded with COR-TEN steel to be tank-tough through and through. Our thick COR-TEN steel makes each ABI Manure Spreader extremely rust and corrosion resistant. But that's just one of many ways our spreaders are built to outlast the barn.

5 REASONS WHY ABI SPREADERS LAST LONGER:

- 1 All manure spreaders are hand-welded using virtually perforation-proof 10 or 12 gauge* COR-TEN steel.
- 2 Spreaders are sand-blasted and painted with RUST-OLEUM, which keeps moisture out and is easy to touch-up.
- 3 Coal tar epoxy box liner is applied to every manure spreader bed for an industrial seal from severe abrasion and corrosion.
- 4 Tongue-and-groove poly-lumber flooring resists warping and won't rust, corrode, or rot.
- 5 They're built with stronger, higher quality components from top to bottom.

*25-65 cu. ft. manure spreaders use 12 gauge, all other sizes are built with even thicker 10 gauge steel.



OPTIONAL EQUIPMENT

PASTURE/FINES PAN

Add the fines pan when spreading on pastures to ensure all manure is evenly spread with no manure trail out the back. It's hinged for easy cleaning and emptying.

MANUAL OR HYDRAULIC GATE

End gates close off the back end of the manure spreader to prohibit spillage. Recommended for those planning to heap the load for maximum capacity. Manual end gates are available for 25-65 ft³ units. Hydraulic end gates require one set of hydraulic ports on a tractor, and are available for 85, 125, and 185 ft³ models.





PHOTO CREDIT: DOUBLE DAN HORSEMANSHIP

Expert Perspective

DAN JAMES

Liberty & Reining

"With fifteen to twenty horses on the farm at a time, we rely on the ABI Manure Spreader to manage stall waste and keep our pastures healthy. Going out to spread manure is quick and easy.

The ABI Manure Spreader takes all the guesswork out of pasture rotation because of the super fine spread. We can turn the pastures much quicker without affecting grazing pastures or the gut health of our horses."

**Call a Product Specialist at 877-788-7253
or Visit www.ABIManureSpreaders.com**

4-SPEED GROUND DRIVEN SPREADER MODELS

ABI's 4-speed ground drive manure spreaders can be pulled with a garden tractor, ATV/UTV, or compact tractor, and are ideal for farms with limited acreage or space. Each ground drive spreader has a swing-away wheeled jack stand (footed jack on 85 ft³) that enables effortless tow vehicle hookup and storage. Engagement levers are easy to pull and require no difficult setup of cable/shaft hookups. The rear bumper bar ensures safety and damage-free storage and use.

A HIGHER STANDARD FOR COMPACT SPREADERS



25 FT³ GROUND DRIVEN

- Up to 4 horses
- 680 lbs.
- 2 beaters
- 8 spreading paddles
- 32 shredding blades
- 4 lever-controlled speed
- Coal-tar epoxy bed liner
- Poly-lumber floor
- 12 gauge COR-TEN steel
- Min. tow vehicle: 18hp mower or 350cc ATV



50 FT³ GROUND DRIVEN

- Up to 8 horses
- 825 lbs.
- 2 beaters
- 10 spreading paddles
- 32 shredding blades
- 4 lever-controlled speed
- Coal-tar epoxy bed liner
- Poly-lumber floor
- 12 gauge COR-TEN steel
- Min. tow vehicle: 22hp sub- & compact tractor or 550cc ATV



(SHOWN WITH OPTIONAL EQUIPMENT)



65 FT³ GROUND DRIVEN

- Up to 11 horses
- 947 lbs.
- 2 beaters
- 10 spreading paddles
- 32 shredding blades
- 4 lever-controlled speeds
- Coal-tar epoxy bed liner
- Poly-lumber floor
- 12 gauge COR-TEN steel
- Min. tow vehicle: 25hp sub- & compact tractor or 600cc AWD ATV/UTV



85 FT³ GROUND DRIVEN

- Up to 15 horses
- 2,095 lbs.
- 3 beaters
- 8 spreading paddles
- 100 shredding blades
- 4 lever-controlled speeds
- Coal-tar epoxy bed liner
- Poly-lumber floor
- 10 gauge COR-TEN steel
- Min. tow vehicle: 25hp compact & utility tractor

VARIABLE SPEED PTO DRIVEN MODELS

Our PTO manure spreaders provide an even higher level of performance for tractors with a 540 RPM PTO (Power Take Off). This spreader is ideal for extremely heavy loads where extra power may be needed or on terrain that is not conducive to good ground traction. However, despite its heavy capability, the PTO Spreader treads lightly over pastures to protect the ground.

The operator can control the speed of the beaters and apron chain to control material flow rate—all from the seat of the tractor. The apron web (conveyor) has four speed settings controlled by a pull rope. These features make the PTO models hardworking and long-lasting solutions for larger operations.



TACKLE HORSE & CATTLE MUCK WITH EASE



50 FT³ PTO DRIVEN

- Up to 8 horses
- 825 lbs.
- 2 beaters
- 8 spreading paddles
- 32 shredding blades
- 4 rope-controlled speed
- Coal-tar epoxy bed liner
- Poly-lumber floor
- 12 gauge COR-TEN steel
- Min. tow vehicle: 22hp compact and utility tractor



85 FT³ PTO DRIVEN

- Up to 15 horses
- 2,095 lbs.
- 3 beaters
- 10 spreading paddles
- 32 shredding blades
- 4 rope-controlled speed
- Coal-tar epoxy bed liner
- Poly-lumber floor
- 10 gauge COR-TEN steel
- Min. tow vehicle: 25hp compact and utility tractor

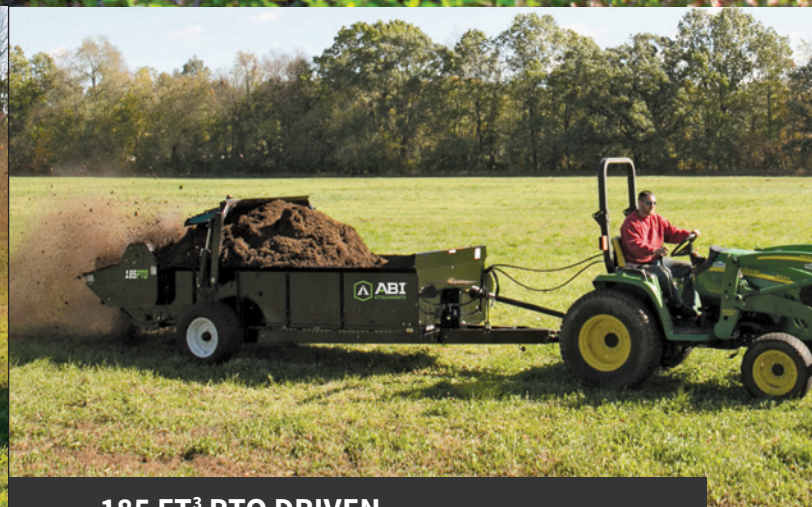


(SHOWN WITH OPTIONAL EQUIPMENT)



125 FT³ PTO DRIVEN

- Up to 22 horses
- 2,650 lbs.
- 3 beaters
- 10 spreading paddles
- 120 shredding blades
- 4 rope-controlled speeds
- Coal-tar epoxy bed liner
- Poly-lumber floor
- 10 gauge COR-TEN steel
- Min. tow vehicle: 35hp compact and utility tractor



185 FT³ PTO DRIVEN

- Up to 35 horses
- 3,175 lbs.
- 3 beaters
- 14 spreading paddles
- 160 shredding blades
- Variable hydraulic speeds
- Coal-tar epoxy bed liner
- Poly-lumber floor
- 10 gauge COR-TEN steel
- Min. tow vehicle: 50hp utility tractor

MANURE SPREADERS COMPARISON

	25 ft ³ Ground Drive	50 ft ³ Ground Drive	65 ft ³ Ground Drive	85 ft ³ Ground Drive	50 ft ³ PTO	85 ft ³ PTO	125 ft ³ PTO	185 ft ³ PTO
CAPACITY								
HEAPED CAPACITY	25 cu. ft.	50 cu. ft.	65 cu. ft.	85 cu. ft.	50 cu. ft.	85 cu. ft.	125 cu. ft.	185 cu. ft.
STRUCK CAPACITY	15 cu. ft.	29 cu. ft.	39 cu. ft.	47 cu. ft.	29 cu. ft.	47 cu. ft.	84 cu. ft.	112 cu. ft.
NUMBER OF HORSES	up to 4	up to 8	up to 11	up to 15	up to 8	up to 15	up to 22	up to 35
FEATURES								
PLATFORM	Compact	Compact	Compact	Commercial Ag	Compact	Commercial Ag	Commercial Ag	Commercial Ag
DRIVE	Ground	Ground	Ground	Ground	PTO	PTO	PTO	PTO
STEEL TYPE	COR-TEN	COR-TEN	COR-TEN	COR-TEN	COR-TEN	COR-TEN	COR-TEN	COR-TEN
STEEL GAUGE	12	12	12	10	12	10	10	10
# OF BEATERS	2	2	2	3	2	3	3	3
IN-LINE SHREDDING BEATER	✓	✓	✓	✓	✓	✓	✓	✓
# OF SPREADING PADDLES	8	10	10	8	10	8	10	14
# OF SHREDDING BLADES	32	32	32	100	32	100	120	160
FLOW CONTROL SPEEDS	4	4	4	4	4	4	4	variable
SPEED ADJUSTMENT	Lever	Lever	Lever	Lever	Pull Rope	Pull Rope	Pull Rope	Hydraulic
SPRAY SHIELD	✓	✓	✓	-	✓	-	-	-
JACK STAND	Dolly Wheel	Dolly Wheel	Dolly Wheel	Skid Plate	Skid Plate	Skid Plate	Skid Plate	Skid Plate
TIRES	Ag Traction	Ag Traction	Ag Traction	Ag Traction	Radial	Floatation	Floatation	Floatation
RATCHETING HUBS	✓	✓	✓	✓	-	-	-	-
VEHICLE REQUIREMENTS								
TRACTOR TYPE	MOWER	SUB & COMPACT	SUB & COMPACT	COMPACT & UTILITY	COMPACT & UTILITY	COMPACT & UTILITY	COMPACT & UTILITY	UTILITY
MIN. HORSEPOWER	18 HP	22 HP	25 HP	25 HP	22 HP	25 HP	35 HP	50 HP
MIN. HYDRAULIC PUMP	-	-	-	-	-	-	-	8 GAL/MIN
UTILITY VEHICLE TYPE	ATV & UTV	ATV & UTV	LARGE ATV & UTV	-	-	-	-	-
MIN. CC	350 CC	550 CC	600 CC 4WD	-	-	-	-	-
WEIGHTS & DIMENSIONS								
UNIT WEIGHT	680 lbs	825 lbs	947 lbs	2095 lbs	825 LBS	2,095 LBS	2,650 LBS	3,175 LBS
SHIPPING WEIGHT	854 lbs	1,001 lbs	1,225 lbs	2,095 lbs	1,001 lbs	2,095 lbs	2,650 lbs	3,175 lbs
EMPTY TONGUE WEIGHT	45 lbs	57 lbs	75 lbs	150 lbs	57 lbs	150 lbs	200 lbs	250 lbs
TOTAL DIMENSIONS (L X W x H)	110"x48"x43"	132"x54"x43"	151"x58"x54"	200"x72"x59"	132"x54"x43"	200"x72"x59"	234"x86"x66"	252"x94"x68"
BOX DIMENSIONS (L X W x H)	60"x28"x16"	76"x35"x19"	84"x35"x19"	100"x40"x20"	76"x35"x19"	100"x40"x20"	125"x48"x24"	140"x60"x23"
BOX FLARED HEIGHT	33"	40"	40"	45"	40"	45"	53"	68"
LOADING HEIGHT	33"	34"	36"	43"	34"	43"	50"	53"
WARRANTY								
MECHANICAL	36 MONTHS	36 MONTHS	36 MONTHS	36 MONTHS	36 MONTHS	36 MONTHS	36 MONTHS	36 MONTHS
APRON CHAIN & CONSTRUCTION	10 YEARS	10 YEARS	10 YEARS	10 YEARS	10 YEARS	10 YEARS	10 YEARS	10 YEARS
POLY-LUMBER FLOOR	LIFETIME	LIFETIME	LIFETIME	LIFETIME	LIFETIME	LIFETIME	LIFETIME	LIFETIME

PROPERTY ATTACHMENTS

YOUR LAND. YOUR RULES.

Whether you have jobs you want to get done around your property, or you need tank-tough landscaping implements, we have industry-leading equipment for you. Get your outdoor work done faster and better with tools designed by and for property owners and landscapers.

4 JOBS OUR PROPERTY TOOLS ARE USED FOR:

- 1 Restoring gravel driveways and lots
- 2 Hauling cargo around the property
- 3 Contract landscaping jobs that involve dirt, seeding, or gravel
- 4 Preparing food plots around your property



SR1 RAKE



WORKMAN XL



SR3 RAKE



FOOD PLOT DISC



WORKMAN XL

DUAL-AXLE ATV DUMP TRAILER

The Workman trailer was designed to be the perfect companion for an ATV or UTV. Just the right size for maneuvering and hauling, just the right weight for durability and safety, and just the right features for efficiency and ease-of-use.



EASY HAUL AND DUMP



RUGGED OFF-ROAD HAULING

To get your payload to or from the work-site, we gave the Workman massive 25" 4-ply tires, high-speed bearings, 4-wheel independent suspension, and electric brakes. While navigating rugged terrain, down a slope, or moving quickly in an open space, the Workman XL is built to keep your payload under control.



HEAVY-DUTY BUILD & CAPACITY

With dual 800 lb. axles (for a total 1,600 lb. GVWR), the Workman XL is a serious work trailer ready to get the job done. The Workman is not a garden cart like you'd see at a big-box store or online. It's the most capable ATV dump trailer on the market, that can tackle any ATV or UTV-sized job with ease, day after day for years to come.



POWERFUL DUMP SYSTEM

A handlebar-mounted, push-button power dump system provides effortless unloading. Incrementally dump while slowly driving forward to evenly apply gravel to a driveway. The trailer's bed height, pivot point, and maximum dump pitch are designed to completely dump any payload. A wireless remote option is available.

HEAVY-DUTY FEATURES

- Push-button power dump system
- Handlebar dump control (wireless option)
- Electric brakes and taillight for safety
- 4-wheel independent torsion suspension
- 25" 4-ply tires and high speed bearings
- Dual 800 lb. axles—1,600 lb. GVWR
- Welded frame with 11" ground clearance
- Complete-dump trailer bed design
- 14-gal. welded bed and double-hinged tailgate

THE HEAVY DUTY HAULER



(SHOWN WITH OPTIONAL EQUIPMENT)

GREAT FOR HAULING - HAY - FEED - MANURE - FIREWOOD - GRAVEL AND ROCKS - DIRT - COMPOST - MULCH - JUMPS - TACK - GEAR - HUNTING GAME AND SUPPLIES - AND SO MUCH MORE!



Call a Product Specialist at 877-788-7253
or Visit www.WorkmanTrailer.com

FOOD PLOT DISC

Prep gardens, restore wild animal damage, cultivate food plots, and so much more. These optional 14" notched discs transform America's favorite arena drags into the ideal food plot tractor attachment. The weight of the drags maximize the impact of the aggressive disc angle to shred through vegetation and cultivate the soil. The finish rake can then be used to finish the surface and prepare for seeding.

For compatible attachments, refer to pg. 6, pg. 8, and pg. 16.



BROADCAST SPREADER

Ideal for spreading seed and fertilizer on gardens, wildlife food plots, pastures, and lawns. Also great for spreading salt on driveways and parking areas in the winter. Get a PTO-driven model for tractor or a ground driven model for ATVs; PTO model includes a large tumbling style agitator, ground drive model utilizes 16" and 8" wide tires for reliable ground traction. This tool is backed by a 24-month limited warranty.



VERSA-DRILL CULTIPACKER

After tilling and harrowing, use the versa-drill cultipacker to firm up and dimple the soil. Re-cultipack after seeding to press the seed into the ground and create moisture-holding pockets for healthy growth. Configurable for ATV/UTV, category one three-point tractor (up to 45 hp), or both. Packer wheels are 9 1/2" in diameter with crushing knobs and are mounted on a 1 3/4" shaft. Lower 3-point mounting pins included. The upper pin and top link are sold separately.



SR1

The SR1 is a simple, solid tool for tracked and wheeled skid steers. The SR1 powers through potholes, hardpan, and creeping vegetation, and can easily renovate arenas, round pens, and hard-to-reach corners of your property. The low profile design provides expansive visibility. The heavy duty scarifiers have replaceable tips and the hardened-steel finish rake is replaceable in sections. The SR1 is simple to use and ready to get tough work done with your skid steer for many years to come.



SR3

The SR3 is a commercial-grade attachment for tracked and wheeled skid steers. It incorporates an auto-leveling blade, hydraulic scarifiers and a finishing rake into one tough pothole and hardpan-pulverizing tool. Clear sight lines to the front edge of the tool ensure you can confidently work along fences, side-walls, concrete edges, irrigation heads, landscaping, and buildings. The SR3 is built with replaceable wear parts on all ground engaging components to ensure its longevity.





ABI ATTACHMENTS
520 S. BYRKIT AVE.
MISHAWAKA, IN 46544

CURRENT RESIDENT OR:

FOR MORE INFORMATION OR TO ORDER, CALL A PRODUCT SPECIALIST 877-788-7253

**I HAVE VERY LITTLE TIME,
WITH A LOT TO DO.
I VALUE ABI BECAUSE
THEIR EQUIPMENT HELPS
PEOPLE DO IT ALL.**

**BRONCO
MENDENHALL**

*FORMER BYU & UVA HEAD FOOTBALL COACH
HEAD COACH UNIVERSITY PODCAST HOST*

